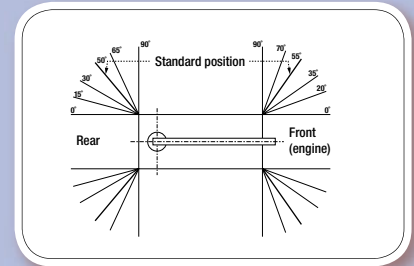
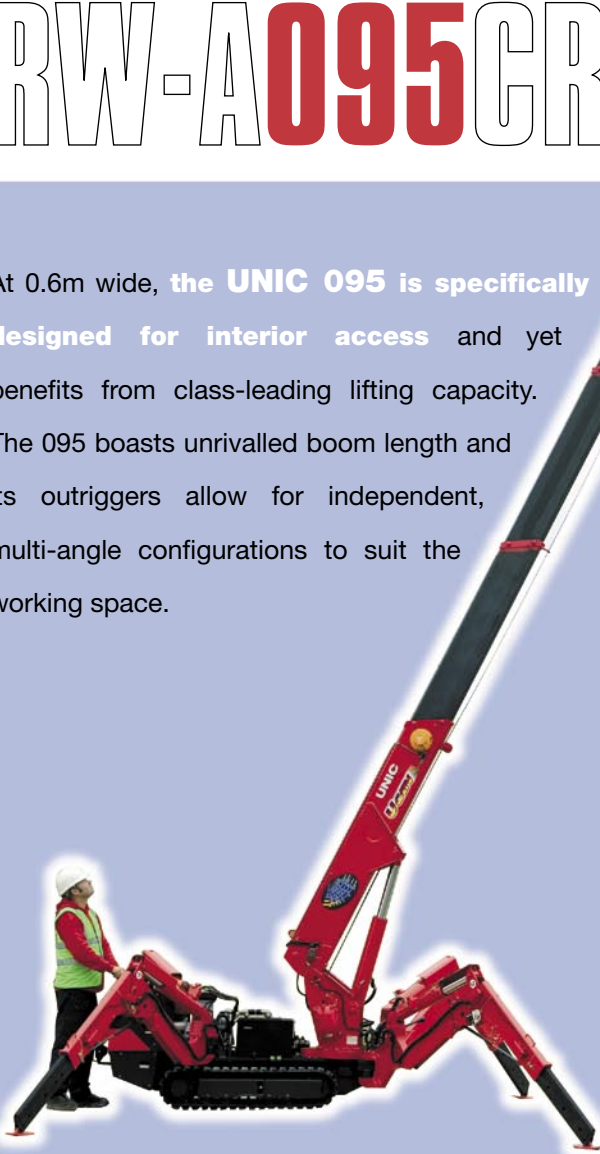


URW-A095CR

(0.995t x 3.5m)

At 0.6m wide, the **UNIC 095** is specifically designed for interior access and yet benefits from class-leading lifting capacity. The 095 boasts unrivalled boom length and its outriggers allow for independent, multi-angle configurations to suit the working space.

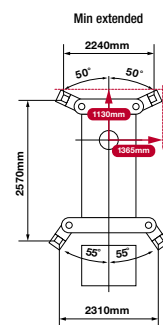
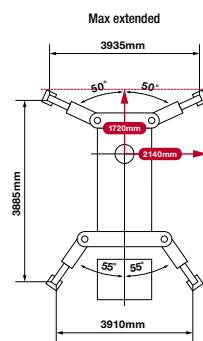


- Capacity 0.995t x 3.5m
- Total width 0.6m
- Max working radius 8.41m
- Max boom length 8.65m
- Petrol powered with optional mains electric and LPG
- Zero length increase with electric option
- Six-position configurable outriggers
- Intelligent voice warning system
- Overload warning device senses outrigger displacement
- Cable remote control (radio remote option)

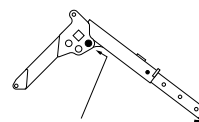


UNIC

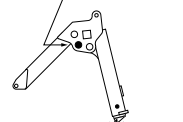
Crane capacity	capacity:	0.995t x 3.5m
Max working radius	max:	8.41m
Max lifting height	approx:	8.8m
Rope length	max:	11.7m (4 fall), 23.4m (2 fall), 46.8m (1 fall)
Dimensions	folded:	2690mm (l) x 600mm (w) x 1380mm (h)
Weight	unladen:	1850kg (1950kg with electric option)
Point loadings	Due to the many variables involved, point loadings are only available on request	
Hook speed	approx:	10m/min (with 4 layers and 4 falls)
Telescopic system	boom length:	2.53 - 8.65m
	telescoping speed:	6.12m/20 seconds
	boom type:	5 section hydraulically telescoping boom, hexagonal box construction
Derricking angle/speed	approx:	0 - 78°/11 seconds
Slewing angle/speed	approx:	360° (continuous) 1.5min ⁻¹ (rpm)
Traction system	drive:	hydrostatic, step-less forward and reverse
	travel speed:	0 - 2.3km/h
	gradability:	20°
	track ground length:	1050mm
	track ground pressure:	48kPa (0.49kg/cm ²)
	track width:	180mm
Engine	manufacturer:	Mitsubishi
	fuel:	petrol (LPG dual, electric dual and diesel options)
	maximum output:	9.6kW (13PS) / 2500min ⁻¹ (rpm)
	starting method:	electric and recoil start as standard
	tank capacity:	6 litres
Electric motor	power:	3.7kW
	voltage:	400v AC 50/60Hz
Standard equipment	overload warning device, overload warning lamps, computer controlled intelligent voice warning system, cable remote control (9m)	
Optional equipment	2 fall hook block, 1 fall hook block, radio remote control, LPG dual power, mains electric dual power (400v), diesel engine, low marking tracks	



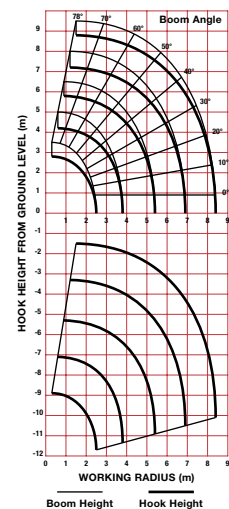
Outrigger setting with inner box extended to its maximum



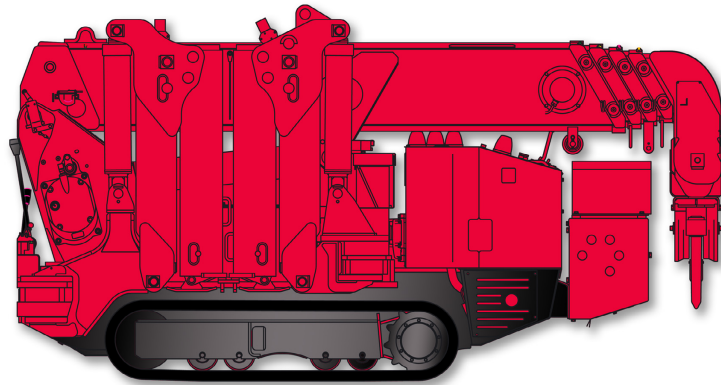
Position of pin



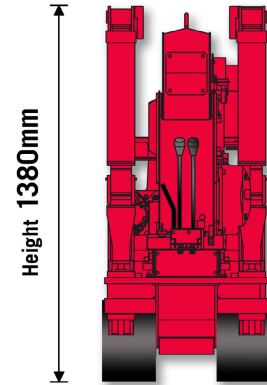
Outrigger setting with inner box extended to its minimum



CRANE ELEVATIONS



Length **2690mm**



Height **1380mm**

Width **600mm**

Track Width **180mm**

RATED LOADS

URW-A095CR

SECOND STAGE EXTENDED 2.53 - 4.075M BOOM LENGTH

Working radius	m	up to 1.0	1.4	1.5	1.8	2.0	2.5	3.0	3.5	3.835
Outrigger	Max-extended	kg	995	995	995	995	995	995	995	900
	Min-extended	kg	995	995	995	995	650	490	350	250

THIRD STAGE EXTENDED 4.075 - 5.61M BOOM LENGTH

Working radius	m	up to 2.2	2.5	2.9	3.0	3.5	4.0	4.5	5.0	5.37
Outrigger	Max-extended	kg	995	995	995	995	800	650	520	430
	Min-extended	kg	800	650	530	500	380	280	160	120

FOURTH STAGE EXTENDED 5.61 - 7.13M BOOM LENGTH

Working radius	m	up to 3.3	3.8	4.0	4.5	5.0	5.5	6.0	6.5	6.89
Outrigger	Max-extended	kg	850	850	750	600	500	420	360	270
	Min-extended	kg	420	340	300	250	190	140	100	60

FIFTH STAGE EXTENDED 7.13 - 8.65M BOOM LENGTH

Working radius	m	up to 3.8	4.1	4.5	5.0	5.5	6.0	6.5	7.0	8.0	8.41
Outrigger	Max-extended	kg	550	550	450	370	310	270	230	200	150
	Min-extended	kg	350	290	250	200	160	130	100	70	40